

INTRODUCING GREATER GROUP

Company Profile

February 2023

ABOUT US

WHY GREATER GROUP?



**GREATER GROUP
IS A GLOBAL MULTI-DISCIPLINARY
DESIGN AND BUILD AGENCY.
WE HAVE BEEN CREATING INTELLIGENT
RETAIL ENVIRONMENTS FOR OVER
30 YEARS.**

10.000+ Stores Designed

30.000+ Store Built

2006 Shanghai Office Established

10.000+ Display/SIS Manufactured



145⁺

TALENTED STAFF
GLOBALLY

65⁺

TALENTED
DESIGNERS

10

GLOBAL
OFFICES

85⁺

CLIENTS
SERVICED

30⁺

YEARS IN
BUSINESS

20⁺

YEARS DESIGN
EXPERIENCE IN CHINA

OFFICE: MELBOURNE | SYDNEY | NEW ZEALAND | HONG KONG | SHANGHAI | SINGAPORE | MALAYSIA | JAKARTA | BALI | LONDON

GLOBAL OFFICES & FACILITIES

145

STAFF GLOBALLY

16

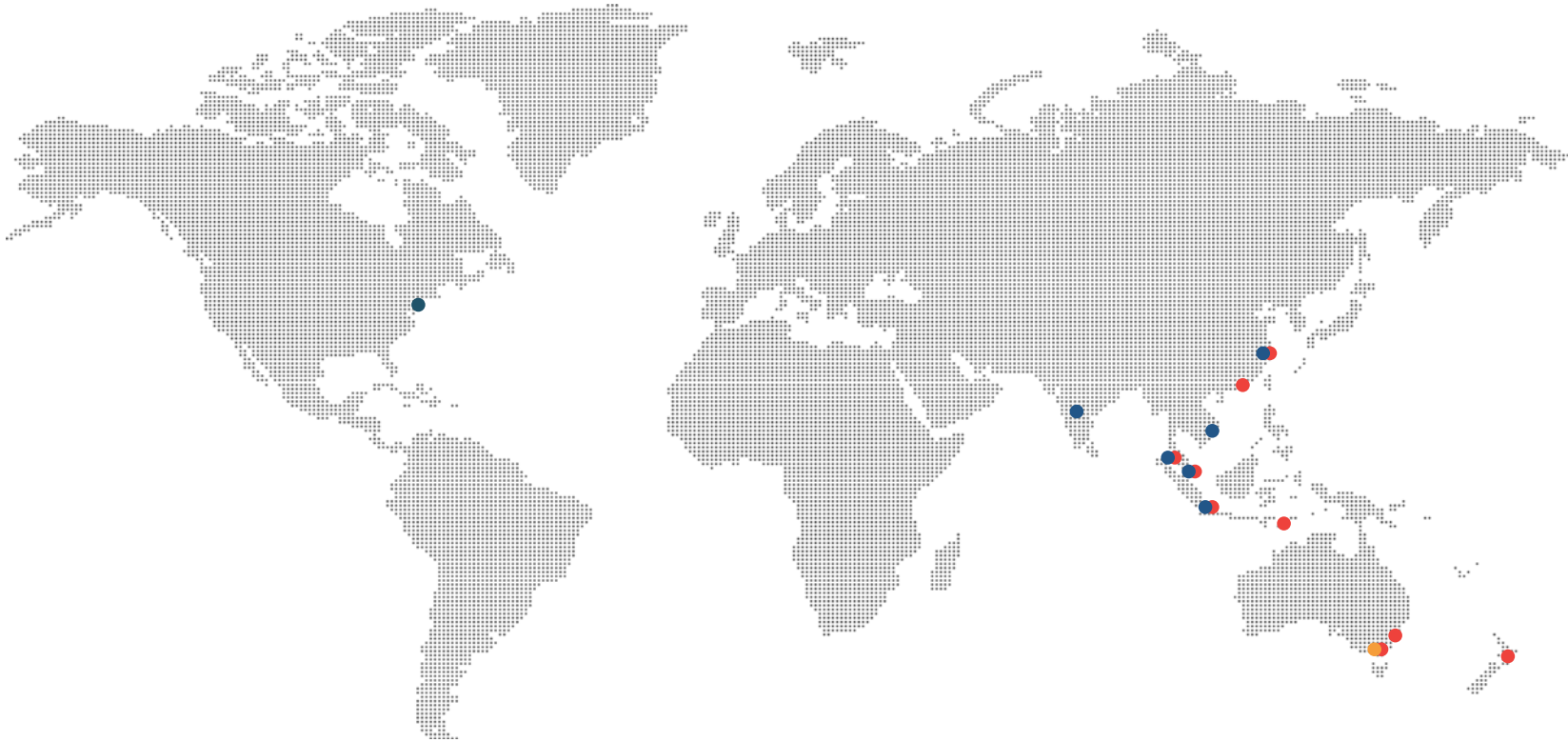
HOURS COVERAGE

9

OFFICES GLOBALLY

6

TIME ZONES



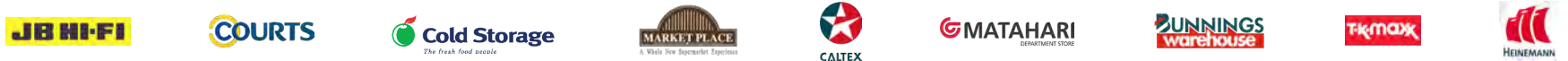
Australia Melbourne Sydney	New Zealand Auckland	China Shanghai	Hong Kong	Singapore	Indonesia Jakarta Bali	Malaysia Kuala Lumpur	Australia Melbourne
United States	India	China Guangdong Xiamen Shanghai	Vietnam	Singapore	Indonesia Jakarta Bali	Malaysia Kuala Lumpur	<div><div></div> OUR OFFICES</div> <div><div></div> PARTNER FACILITIES</div> <div><div></div> OUR FACILITIES</div>

OUR CLIENTS

TECHNOLOGY & TELCO



LARGE FORMAT



FOOD & BEVERAGE



BANKING & HEALTH SERVICES



AUTOMOTIVE



JEWELLERY & WATCHES



FASHION & APPAREL



LUXURY & JEWELLERY



LIFESTYLE & SPECIALITY



BRANDS & DISTRIBUTORS



WORKPLACE & COMMERCIAL



**Neil Arrowsmith**

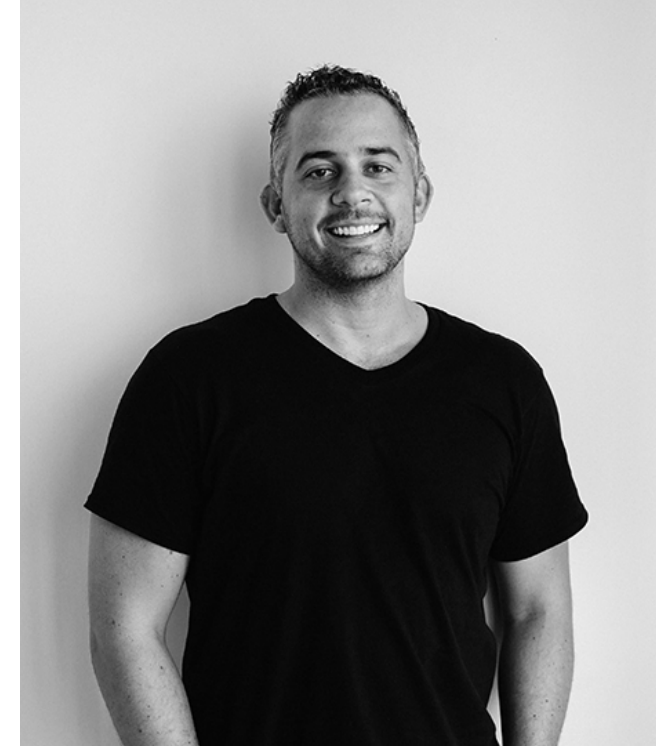
CEO Global / Partner

Neil's expertise lies in understanding the way people buy and how to communicate at store level to maximise sales and profitability, calling it 'the science of retail'. His extensive knowledge of store planning, guiding customers towards the desired direction and implementing methods for maximising sales while decreasing CAPEX and OPEX is key in adding value to all our projects.

**Bob Angle**

Global Design Director / Partner

Bob has been working to provide succinct retail fitout solutions to leading brands across the world for 30 years. In accordance to Greater Group's objectives of creating intelligent and profitable retail environments, Bob is an expert in designing stores that increase sales, reduce walk-outs and attract new customers.

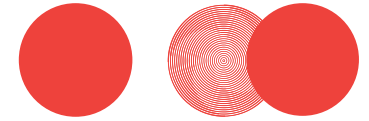
**Ryan Arrowsmith**

Asia CEO/Partner

With more than 15 years' experience in the retail industry, Ryan manages the execution of mass and multi-market retail roll-outs across Asia Pacific. He has successfully delivered retail programmes in 23 countries, rolling out 25 000+ stores and 4 000+ kiosks. Experienced in risk management for retailers and brand supply lines, Ryan is also adept at planning retail market entry strategies as well as managing culturally diverse retail executions.

OUR CAPABILITIES

DESIGN SERVICES



DESIGN & DOCUMENTATION

Customer Journey
Creative
Specification
Design Development
Construction Documentation

3D & DIGITAL VISUALIZATION

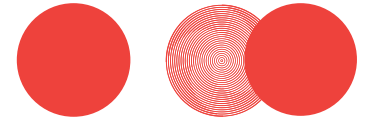
3D Modelling
Still Image & Animation Render
360 VR Still & Animation
Augmented Reality
Realtime Visualization

BRANDING & GRAPHICS

Environmental Graphics
Signage & Wayfinding
Visual Merchandising
Brand Identity
UI/UX & Motion Graphics

BUILD SERVICES

Greater Group attains global quality whilst lowering procurement costs by up to 25%, all through sourcing in Asia.



PROCURE

- Fixture & Fitting Sourcing
- Prototyping
- Bulk Manufacture
- Quality Control
- Social Compliance
- Project Pricing
- Logistic Partner

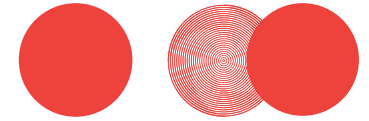
BUILD

- Joinery Manufacturing
- Project Management
- Site Construction
- Fixtures Installation
- Progress Reporting
- Site Setup & Demolition
- Global Logistics

MAINTAIN

- Durability Inspection
- Cleaning Protocols
- On-site Repairs
- Auditing
- Warranty Control

PROJECT MANAGEMENT SERVICES



DESIGN CUSTODIANSHIP

- Brand Protection
- Value Engineering
- Specification Enforcement

MANAGE

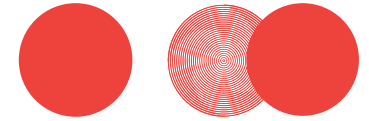
- Multi-market Roll-out
- Schedule Control
- Drawing Review
- Permit Management
- Site Setup & Demolition
- Tender Admin
- Project Pricing

DELIVER

- Global Logistics
- Inventory Management
- Warehousing
- Inspections
- Barcode Tracking
- Warranty Control
- Defect Management

DIGITAL ENGAGEMENT SERVICES

By creatively blending emerging behaviours and technologies, we transform the experience, heighten the reaction and deepen the level of engagement.



LIVE EXPERIENCES

Experience led activations for brands, consumers and employees.

INTERACTIVE ENVIRONMENTS

Smart environments that interact with consumers, driving sales and engagement

ANALYTICS

Optimising on-line presence and reach with insightful analytics

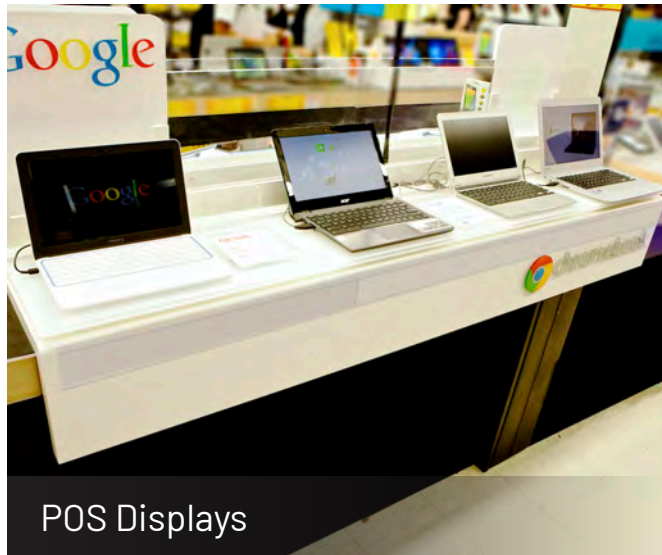
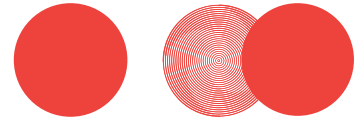
CREATIVE STUDIO

Amplifying interactives with impactful and engaging content

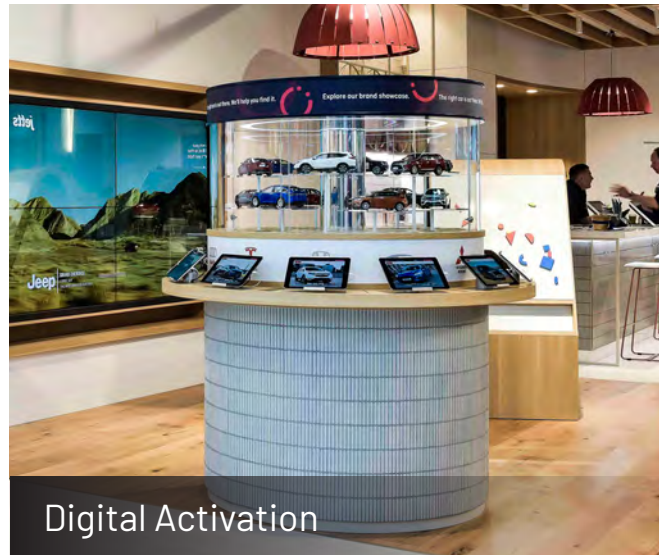
OUR FORMATS

TYPE OF DISPLAYS

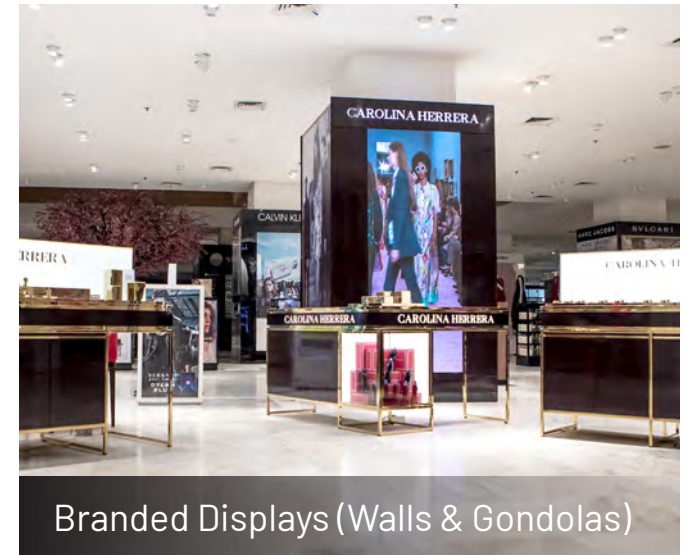
Greater Group executes retail interiors across all formats.



POS Displays



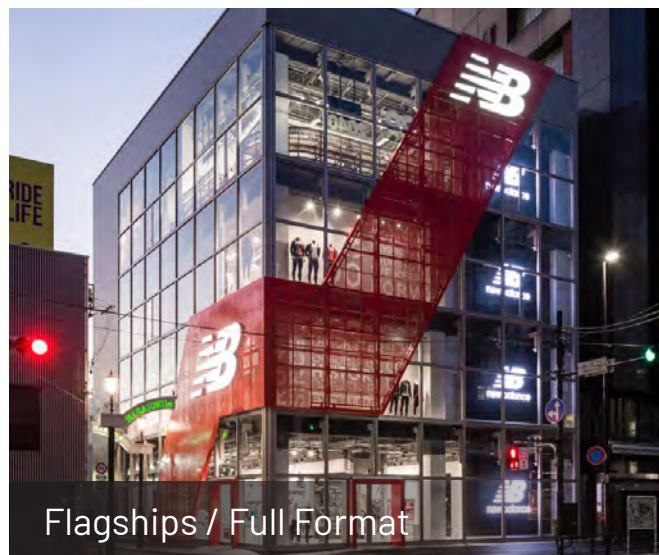
Digital Activation



Branded Displays (Walls & Gondolas)



Pop Up



Flagships / Full Format

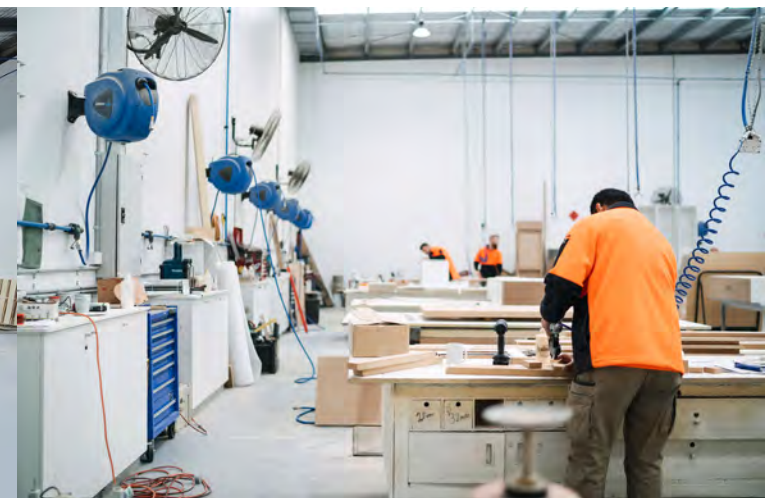
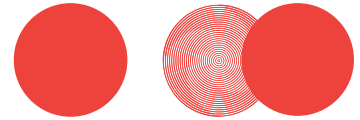


Store in Store

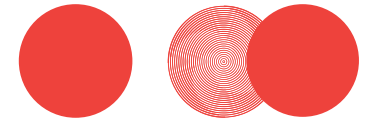
THE LAB

Our joinery manufacturing plant in Tullamarine, Melbourne is Greater Group's own clean efficient space, European standard extraction, and an energy conservation working environment. Facilities include:

- **COMPUTERISED TECHNOLOGY**
- **NATURAL LIGHT & ENERGY EFFICIENT LED**
- **PAINT & LACQUER STORE**
- **METAL SYSTEM OPTIONS**
- **ON SHORE AND OFF SHORE MANUFACTURING CAPABILITIES**
- **OFFICE TO MACHINE TECHNOLOGY**
- **OH&S & ETHICALLY COMPLIANT**
- **FULL PROTOTYPING CAPABILITIES**



DESIGN SOFTWARE CAPABILITIES



Our highly skilled 3D designers use renowned software and powerful computers to ensure quality, compliance and promptness.

Applicable File Format for Rendering :
.PLN | .SKP | .3DS | .OBJ | .FBX | .UPROJECT | .UNITY3D

SUSTAINABLE PRODUCTION PLAN

SUSTAINABILITY & THE ENVIRONMENT

WE'RE COMMITTED TO SUSTAINABLE & ENVIRONMENTALLY ETHICAL MANUFACTURING

Greater Group global strive to promote corporate, social and environmental responsibility in all our manufacturing and business processes. Our clients can be assured that we constantly review our own processes, as well as those of our suppliers, to ensure that we maintain ethical, sustainable and environmentally responsible business practices.

**STRATEGIC
AND INNOVATIVE
THINKING**

**EXCELLENCE IN
SUSTAINABLE
MANUFACTURING
AND DELIVERY**

**MINIMISE
WASTE
GENERATION**

**STRINGENT
MATERIAL
SELECTION**

**EFFICIENT
USE OF
WATER AND
ENERGY**

**STANDARDS
ALIGN TO
SA8000 AND
SMETA**

GG CORPORATE RESPONSIBILITY & SUSTAINABILITY



PAPERLESS

Global share APP reduce paper usage across all offices



ON/OFF SENSOR

Energy savings



DONATIONS & CHARITY

GG & it's vendors collaborate and donate to multiple causes



ECO-FRIENDLY & SUSTAINABLE

Ongoing research & development of eco-friendly materials in collaboration with Universities



AUTOMATED POS SYSTEM

Generate the full bill automatically without scanning barcodes

SUSTAINABILITY

Flat Pack Fixtures to Reduce Size



Reduce CO² Emissions

Value Engineer Fixtures to Reduce Complexity



Reduce CO² Emissions

Locally Source Materials



Reduce CO² Emissions

Use of Honey-Comb Corrugated Cardboard



Recyclable

BRAND PROTECTION

Certification

Safety & Brand Protection

Social Accountability Audits
(in-house & 3rd Party)

Ethical Sourcing

Factory Work Audits

Ethical Sourcing & Safety

GREATER SUSTAINABILITY - SUSTAINABILITY CHARTER



Greater Group Global have long been at the forefront of retail design in Australia and our client relationships span decades. The choices we make now – as designers for our clients behalf – will affect the future of both companies and impact on our planet for years to come.

Whilst maintaining our clients, commercial interests as our foremost priority, our designers will suggest design elements and specification options with the implicit intent of making stores greener; in the interest of everyone.

Whilst there is an overwhelming trend towards a greener and more sustainable retail world, we understand that it is a movement that takes time to implement. Greater Group Global are helping this tide turn by offering a practical sustainability charter to our clients and staying open-minded and welcoming to the green change.

Sometimes sustainable design elements will save our clients' money, sometimes they will cost more, but at all times our designers will endeavor to alert our clients to both the environmental benefits or hazards of our specifications and the cost implications (if any).

Our Policies

- Reduce the use of all raw materials, energy, and supplies.
- Through the use of better materials, we recycle as much used paper, cardboard and packaging as possible, with any other recyclable materials.
- Minimise waste generation, which is also a part of our design process, where we try to make our designs the most efficient it can be, in order to reduce the use of material, and thus minimising waste generation.
- Use of timber products from sustainable (managed) forests.
- Efficient use of water and energy.
- Reduce pollution, emissions and waste.

Communication:

- Raise awareness, encourage participation, and train employees.
- Expect similar environmental standards from all suppliers and contractors.
- Assess the environmental effects of all operations.
- Assist customers in making environmentally sensitive choices.

TYPE OF CERTIFIED MATERIALS

FOR DURABILITY

304 Stainless Steel
Low Ion temper glass
Laminate/ Color Core
Moisture Resistant MDF
Fire Retardant MDF
Synthetic Stone – Corian
Terrazzo

FOR SUSTAINABILITY

FSC Certified Wood
Water-Based Paint
Recycled Metal
Recycled Acrylic
FSC/PEFC Certified Laminate Glass
Grade E0 formaldehyde MDF and Plywood
Low VOC Powder Coating and Paint

OUR PORTFOLIO

PORSCHE SINGAPORE

Automotive



- Fast Facts**
- Design & Build
 - Pop-Up Retail Store
 - Chic Industrial Vibe

MG MOTORS AUSTRALIA

Automotive



- Fast Facts**
- Design, Project Management, Sourcing & Build
 - Flagship Retail Experience
 - First Relaunch into the Australian Market

LINCOLN CHINA

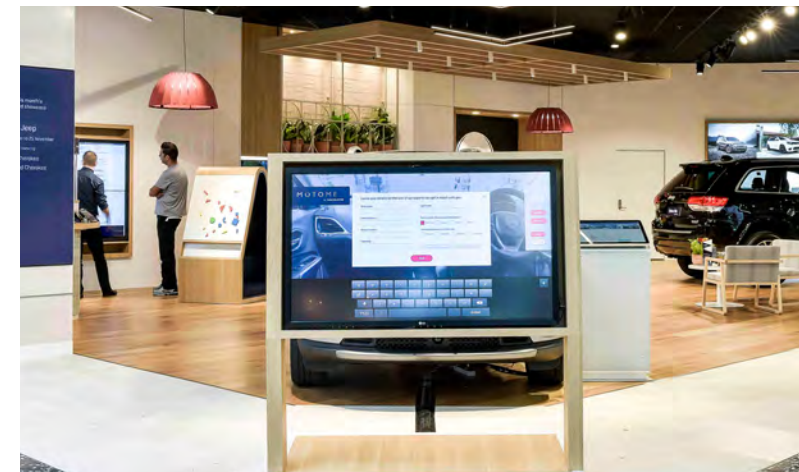
Automotive



- Fast Facts**
- Joinery Procurement
 - 80 Dealerships
 - Digital Activation

MOTOME AUSTRALIA

Automotive



- Fast Facts**
- Design, Procurement & Build
 - First Experience Store in Australia
 - Converge Digital Activation

HYUNDAI AUSTRALIA

Automotive



- Fast Facts**
- Design, Project Management & Build
 - 3 Flagship Stores
 - Custom Joinery Design

NISSAN AUSTRALIA

Automotive



- Fast Facts**
- Project Management & Build
 - 110 Dealerships

BANK OF MELBOURNE AUSTRALIA

Banking & Services



Fast Facts

- Design & Localization
- 125 Stores
- 10 Formats including Mobile Bank and Branch 360 (No Tellers)

HCF AUSTRALIA

Banking & Services



- Fast Facts**
- Design, Procurement & Build
 - New Flagship Store Concept
 - Award-Winning Design

HCF HEALTH & DENTAL AUSTRALIA

Banking & Services



Fast Facts

- Design, Procurement & Build
- Newly Integrated Branch and Dental Flagship
- Modular & Functional Design

HCF POP UP AUSTRALIA

Banking & Services



Fast Facts

- Design Manufacture & Install
- Modularity & Speedy Installation Key Objective
- National Roll-out

CIMB NIAGA INDONESIA

Banking & Services



Fast Facts

- Design & Build
- First Digital Lounge Concept in Indonesia
- Interactive Elements & Digital Shopfront

CIMB NIAGA INDONESIA

Banking & Services



Fast Facts

- Design, Specification & Site Supervision
- Second Digital Lounge Format
- Immersive & Instagrammable Concept

ANZ AUSTRALIA

Banking & Services



- Fast Facts
- Design
 - The First-of-its-Kind in Australia
 - Engaging Customer Experience

ANZ AUSTRALIA

Banking & Services



Fast Facts

- Temporary Format
- Modular Units for Easy Shipping, Storage & Quick Installation
- 5 Additional Kiosks Produced for Further Roll-out

HELLOWORLD AUSTRALIA & NZ

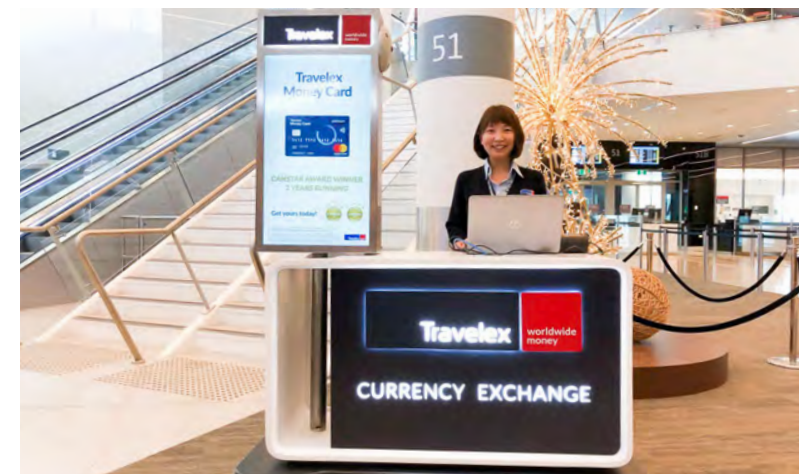
Banking & Services



- Fast Facts**
- Design, Procurement & Build
 - 30 New Concepts
 - 300 Refreshed Stores Nationwide

TRAVELEX ASIA PACIFIC

Banking & Services



- Fast Facts**
- Design, Procurement & Build
 - Roll-out in Multiple Airports (Hong Kong, Japan, Malaysia & Australia)

ST GEORGE AUSTRALIA

Banking & Services

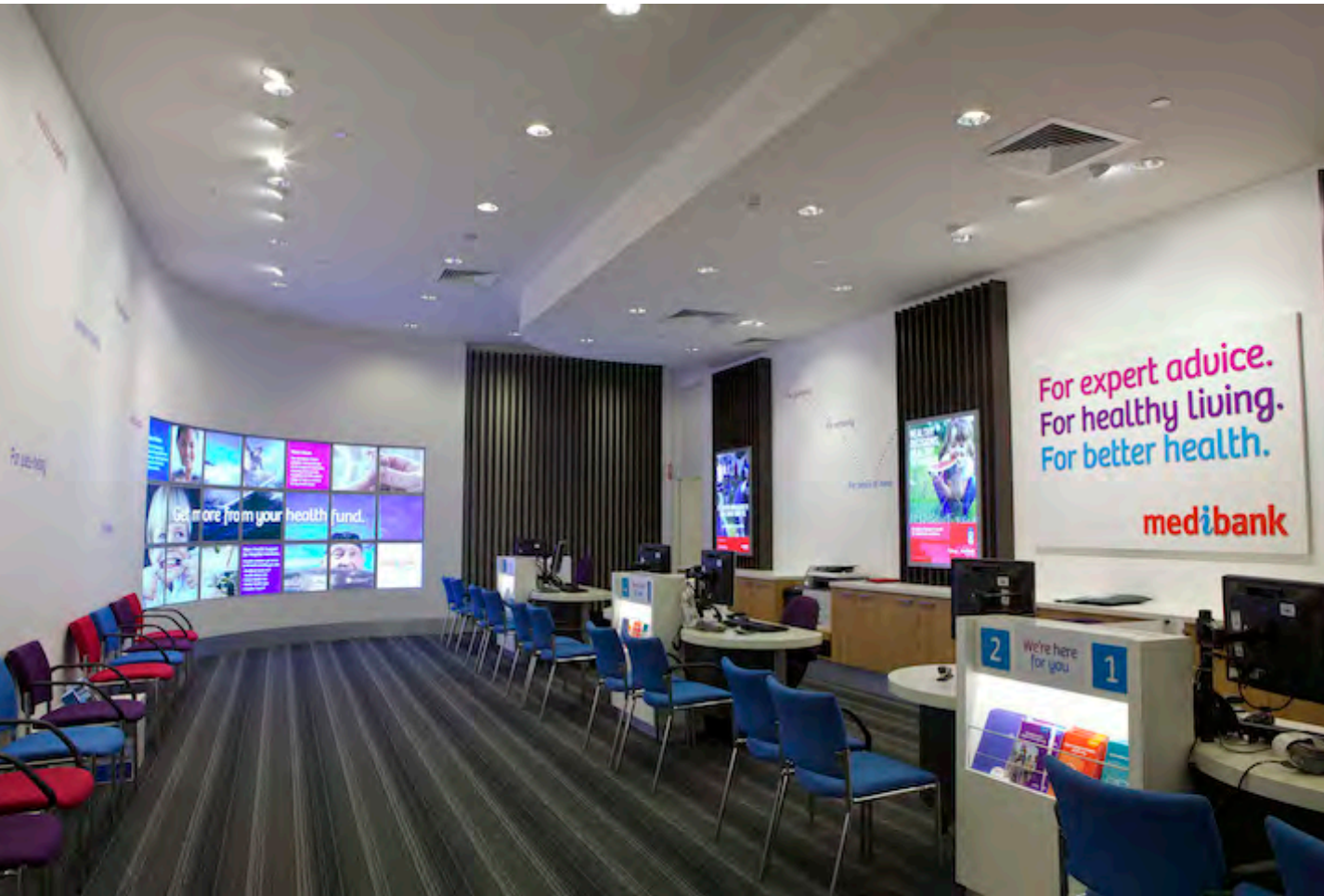


Fast Facts

- Design, Procurement & Build
- 10 Flagship Branches + 120 Branches Refurbishments Nationwide

MEDI BANK AUSTRALIA

Banking & Services



- Fast Facts**
- Design, Procurement & Build
 - New Roll-out

NEW BALANCE GANGNAM FLAGSHIP KOREA

Fashion & Apparel



- Fast Facts
- Design
 - Global Roll-out
 - 32 projects in 16 countries

NEW BALANCE HARAJUKU FLAGSHIP JAPAN

Fashion & Apparel



Fast Facts

- Design
- Global Roll-out
- 32 projects in 16 countries

NEW BALANCE LIFESTYLE JAPAN



- Fast Facts**
- Design
 - First Lifestyle Concept in Japan
 - Flexible Fixture Design

NEW BALANCE BOSTON FLAGSHIP UNITED STATES



Fashion & Apparel



- Fast Facts
- Design
 - Global Roll-out
 - 32 projects in 16 countries

NEW BALANCE LONDON FLAGSHIP UNITED KINGDOM

Fashion & Apparel



- Fast Facts
- Design
 - Global Roll-out
 - 32 projects in 16 countries

RALPH LAUREN PERTH AUSTRALIA

Fashion & Apparel



Fast Facts

- Build & Project Management
- Flagship Store and SIS Execution
- Material Matching and Sourcing

SEAFOLLY AUSTRALIA



- Fast Facts**
- Design & Build
 - Project Management
 - Omnichannel Customer Experience

SEED HONG KONG



Fast Facts

- Build & Fit-out
- Refurbishment & Store Expansion
- Fast Track Project

Fashion & Apparel



LOVE, BONITO HONG KONG

Fashion & Apparel



Fast Facts

- Design & Build
- First flagship store in Hong Kong and outside of SEA
- 185.8 sqm

MATAHARI INDONESIA

Large Format



Fast Facts

- Design & Project Management
- Multi-category & Multi-brand Execution
- 13,000 Sqm Flagship Store

TIGER MIST AUSTRALIA



Fast Facts

- Design & Build
- First Flagship Concept Store
- Contemporary Format & Engaging Aesthetics

Fashion & Apparel



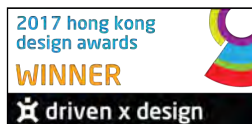
HANES BRAND AUSTRALIA



Fast Facts

- Design, Procurement & Build
- 27 SIS Across 3 Brands in 25 Myer Stores

Fashion & Apparel



CROCS SINGAPORE



Fast Facts

- Project Management
- Fixture Manufacture
- Distributed to multiple SIS activations and full-scale stores across Asia Pacific

CROCS HONG KONG

Fashion & Apparel



Fast Facts

- Procurement & Production
- High quality, modular and flexible store fixtures
- Over 30 stores and SIS activations across 7 countries in APAC

PAUL & SHARK AUSTRALIA



Fast Facts

- Joinery Production & Installation
- Store-in-Store in Department Store

Fashion & Apparel



PALM ANGELS BY MONCLER AUSTRALIA

Fashion & Apparel



- Fast Facts**
- Design & Installation
 - Project Management
 - Pop-up Brand Activation by Moncler

LIVERPOOL FC UNITED KINGDOM

Fashion & Apparel



Fast Facts

- Design & Build
- SIS in 19,500 sqm Retail Space
- Part of the Anfield Stadium Redevelopment

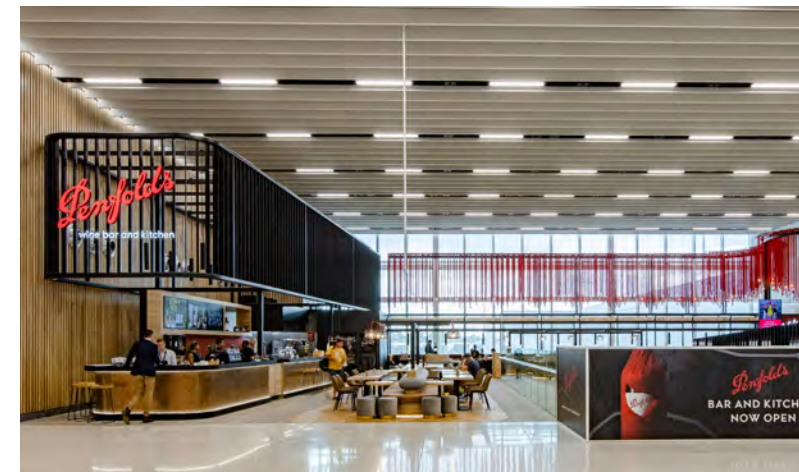
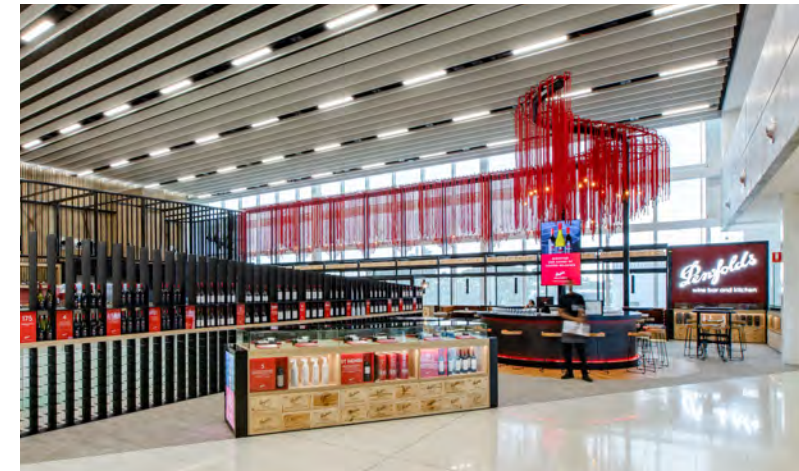
2XU/LVMH AUSTRALIA



- Fast Facts
- Design, Procurement & Build
 - 25-Store Roll-out
 - Multi Format Design

PENFOLDS AUSTRALIA

Food & Beverage

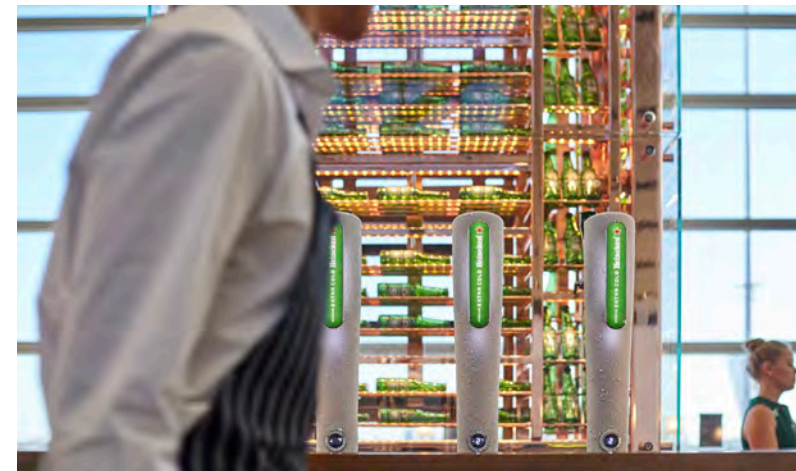


Fast Facts

- Design & Procurement
- Adelaide Airport
- 2020 Melbourne Design Awards Winning Project

HEINEKEN AUSTRALIA

Food & Beverage



- Fast Facts
- Concept Design
 - First Flagship Venue
 - Sydney International Airport

VANTAGE BAR NEW ZEALAND

Food & Beverage



Fast Facts

- Design, Procurement & Build
- Auckland International Airport
- '2020 Melbourne Design Awards' Winning Project

CITYHILL COFFEE AUSTRALIA

Food & Beverage



Fast Facts

- Design
- Canberra Airport
- 2020 Melbourne Design Awards Winning Project

WONDERTREE AUSTRALIA



Fast Facts

- Detailed Design & Specification
- First Branch in The Southern Hemisphere
- Auckland International Airport

Food & Beverage



NOODLE XO AUSTRALIA



Fast Facts

- Design
- Canberra Airport
- '2020 Melbourne Design Awards' Winning Project

Food & Beverage



KITCHEN BY MIKE AUSTRALIA

Food & Beverage



Fast Facts

- Concept Design Proposal
- Part of Emirates Leisure Retail
- Sydney International Airport

AROHA NEW ZEALAND

Food & Beverage



- Fast Facts**
- Design
 - Auckland International Airport
 - '2019 Melbourne Design Awards' Winning Project

HUDSONS AUSTRALIA

Food & Beverage



- Fast Facts**
- 5 Flagship Stores
 - 30 New Concept Stores Designed
 - Multiple Formats inc. Standard Store and Mobile Van

WILLIAM GRANT & SON AUSTRALIA

Food & Beverage



Fast Facts

- Joinery Production
- Retail Store-in-store
- Melbourne and Sydney Airport

COSTA COFFEE SINGAPORE

Food & Beverage



- Fast Facts**
- Design & Build
 - Multi-functional Pantry Space
 - 20.25 Sqm Area in Office

DELIFRANCE SINGAPORE

Food & Beverage



- Fast Facts
- Design of Brand New Flagships
 - Multi-format Roll-out in Singapore
 - Brand Identity Refresh

MAXX COFFEE SINGAPORE



Fast Facts

- Design & Procurement
- Second International Outpost in Singapore
- Furniture Procurement

MAXX COFFEE INDONESIA

Food & Beverage



Fast Facts

- Design
- 10 Flagships Multi-Format Roll-out in Singapore and Indonesia
- Standardised Design Guideline for Future Roll-outs

HARVEST INDONESIA

Food & Beverage



- Fast Facts**
- Design
 - Concept Designs for Roll-outs
 - Brand Refresh for Younger Market

BURGERFUEL GLOBAL

Food & Beverage



Fast Facts

- Design, Procurement & Build
- 9 Store Roll-out in Australia, New Zealand & Middle East
- Re-engineering of Joinery Items

DIAMOND EXCHANGE AUSTRALIA



- Fast Facts**
- Design, Procurement & Build
 - 2 Flagship Stores in Sydney & Melbourne
 - Award Winning High-End Design

Watches & Accessories



SWAROVSKI AUSTRALIA



Fast Facts

- Design & Build
- 5 Flagship Stores Nationwide
- Multi-store Rollout

Watches & Accessories

PANDORA GLOBAL



Fast Facts

- Design, Procurement & Build
- 1200 Stores & 330 Flagships Across 22 Countries

Watches & Accessories



TISSOT INDONESIA

Watches & Accessories



- Fast Facts
- Design Documentation
 - 31 Square Metre
 - Completed December 2019

BREITLING ASIA

Watches & Accessories



Fast Facts

- Design & Build
- 7 Store Roll-out in Taiwan, Hong Kong & Indonesia
- Multi-format

THOMAS AUSTRALIA



Fast Facts

- Design, Procurement & Build
- 5 Store Roll-out Nationwide
- New Contemporary Concept

Watches & Accessories



TROLLBEADS ASIA PACIFIC

Watches & Accessories



- Fast Facts**
- Design, Procurement & Install
 - 30 SIS Roll-out Across APAC

ALEX & ANI AUSTRALIA

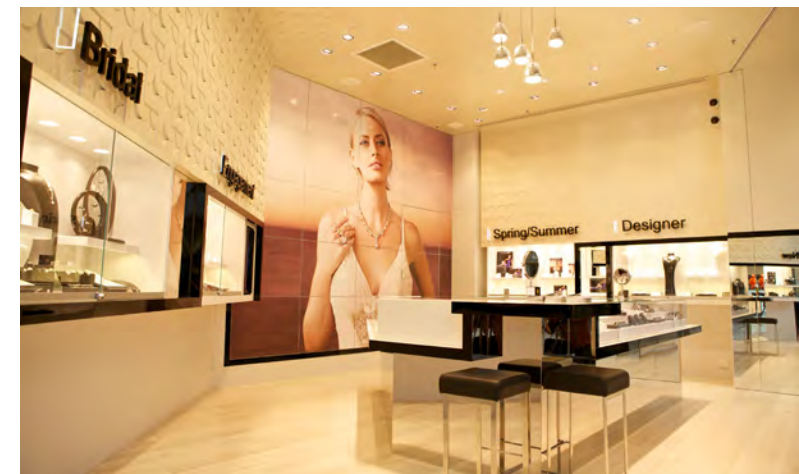


Watches & Accessories



- Fast Facts**
- Design, Procurement, Project Management & Build
 - 10 Store Nationwide Roll-out
 - First Pilot Store in Australia

SECRETS AUSTRALIA



Fast Facts

- Design, Procurement & Build
- 5 Store Nationwide Roll-out
- Market Research & VM Strategy

HEINEMANN DUTY FREE ASIA PACIFIC

Large Format



- Fast Facts**
- 3D Visualization including 360 Virtual Reality
 - New Concept Design with Localised Approach
 - International Airports in Australia, Malaysia and Singapore

HEINEMANN MACAU CHINA

Large Format



- Fast Facts
- Design & Build
 - Beauty & Fragrance Brands
 - Lisboaeta Macau

HEINEMANN - CONFECTIONARY CHINA

Large Format



Fast Facts

- Design & Build
- Confectionary Brands
- Lisboaeta Macau

JB HI-FI AUSTRALIA

Large Format



- Fast Facts**
- Design & Concept Management
 - Australia and New Zealand
 - Over 150 stores and 250 telco kiosks

COLD STORAGE & MARKETPLACE SINGAPORE

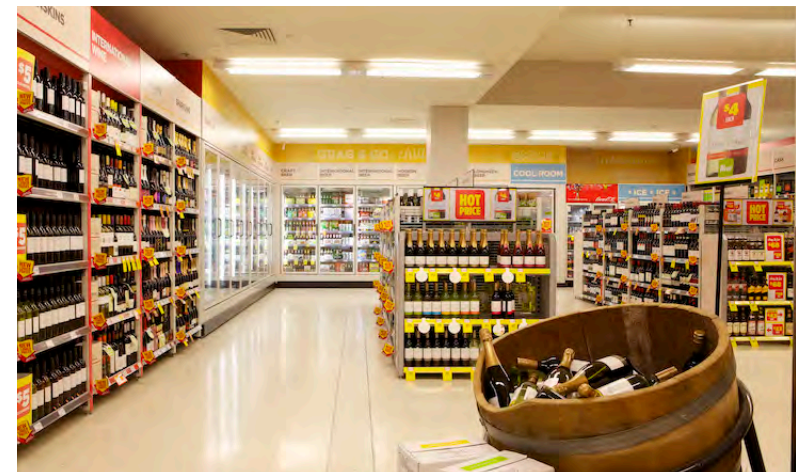
Large Format



- Fast Facts
- Design & Build
 - Multi-store Execution
 - Localisation for Singaporean Market

LIQUORLAND AUSTRALIA

Large Format



Fast Facts

- Design, Wayfinding & Signage
- 120 Stores Nationwide Roll-out
- New Store Concept

MAC COSMETICS AUSTRALIA

Luxury & Beauty



Fast Facts

- Supply & Install
- Joinery Manufacturing by GG's The Lab
- Lotte Duty Free Sydney

LE LABO AUSTRALIA

Luxury & Beauty



Fast Facts

- Supply & Install
- Joinery Manufacturing by GG's The Lab
- Lotte Duty Free Sydney

ORIGINS AUSTRALIA

Luxury & Beauty



Fast Facts

- Supply & Install
- Joinery Manufacturing by GG's The Lab
- Lotte Duty Free Sydney

ESTÉE LAUDER SINGAPORE & CHINA

Luxury & Beauty



Fast Facts

- Design, Procurement & Build
- Event Pad Roll-out in Singapore & China
- 3 Week Lead Time
- Digital Integration

CAROLINA HERRERA (PUIG) INDONESIA

Luxury & Beauty



Fast Facts

- Manufacture, Procurement & Install
- Store-in-Store in Department Store
- Digital Integration

CAROLINA HERRERA (PUIG) CAMBODIA

Luxury & Beauty



- Fast Facts
- Supply & Install
 - Multi-store & Multi-brand Execution

PACO RABANNE (PUIG) CAMBODIA

Luxury & Beauty



Fast Facts

- Supply & Install
- Multi-store & Multi-brand Execution

JO MALONE AUSTRALIA

Luxury & Beauty



Fast Facts

- Project Management, Joinery Production & Installation
- Sydney Airport

PRADA AUSTRALIA

Luxury & Beauty



- Fast Facts
- Project Management
 - Façade Recladding

MIU MIU AUSTRALIA

Luxury & Beauty



- Fast Facts
- Supply & Install
 - Digital Activation

SAMSUNG AUSTRALIA

Technology & Telco



- Fast Facts
- Design & Build
 - 3 Flagship Stores & 1000+ Displays Nationwide

SAMSUNG DISPLAYS ASIA PACIFIC

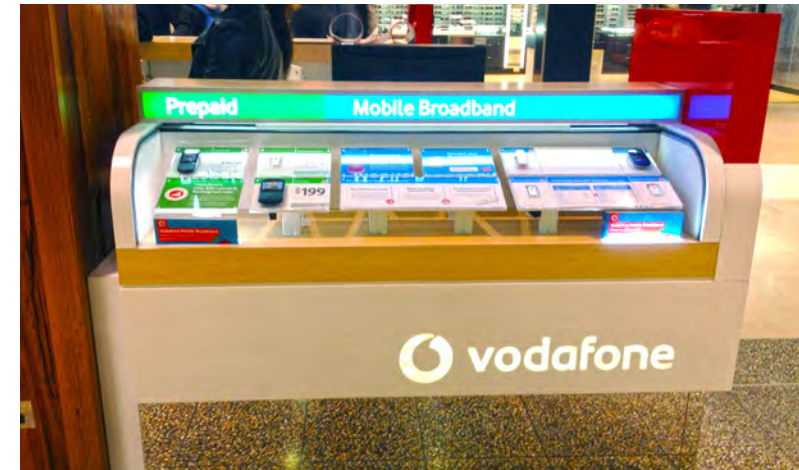
Technology & Telco



- Fast Facts**
- Design, Manufacture, Install & Ongoing Maintenance
 - 10,000 Displays Delivered

VODAFONE AUSTRALIA

Technology & Telco



- Fast Facts**
- 250 Stores & 180 Kiosks Delivered
 - 14% Increase in Sales
 - 38% Increase in Foot Traffic

VIRGIN MOBILE AUSTRALIA

Technology & Telco



Fast Facts

- Design & Prototyping
- 5 Store Roll-out Across Australia

VIRGIN MOBILE (KIOSK) AUSTRALIA

Technology & Telco



Fast Facts

- Design & Build
- One-off Kiosk in Parramatta
- Designed for Younger Market

OPTUS AUSTRALIA

Technology & Telco



- Fast Facts**
- Design, Procurement & Build
 - 300 Stores (5 Formats) Delivered Nationwide

GOOGLE GLOBAL

Technology & Telco



- Fast Facts**
- Design, Procurement & Install
 - 1,000 Units Delivered Across APAC
 - 50 Wall Bay Installs in 1 Week

HUAWEI AUSTRALIA

Technology & Telco



- Fast Facts**
- Design, Procurement & Build
 - Experience Stores and 300+ Store Display Roll-out

HP GLOBAL

Technology & Telco



Fast Facts

- Design, Procurement & Supply
- Customer Welcome Centre Flagship
- 5 Country Roll-out in Singapore, Japan, China, India, Australia

HP CHINA

Technology & Telco



- Fast Facts**
- HP Chongqing 3D Show Room + Office
 - 4 floors, 1000 sqm
 - Full Project Management

SINGTEL SINGAPORE



Technology & Telco



Fast Facts

- Concept & Design
- Visual Merchandising
- Nationwide Roll-out

MICROSOFT HEADQUARTERS AUSTRALIA

Commercial

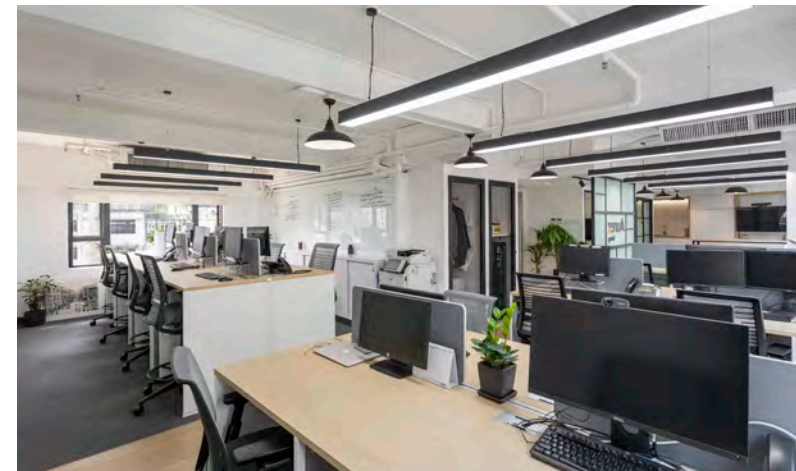
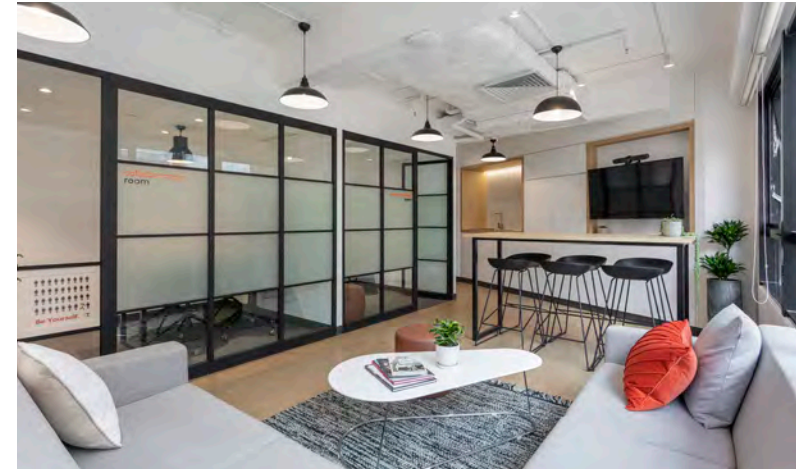
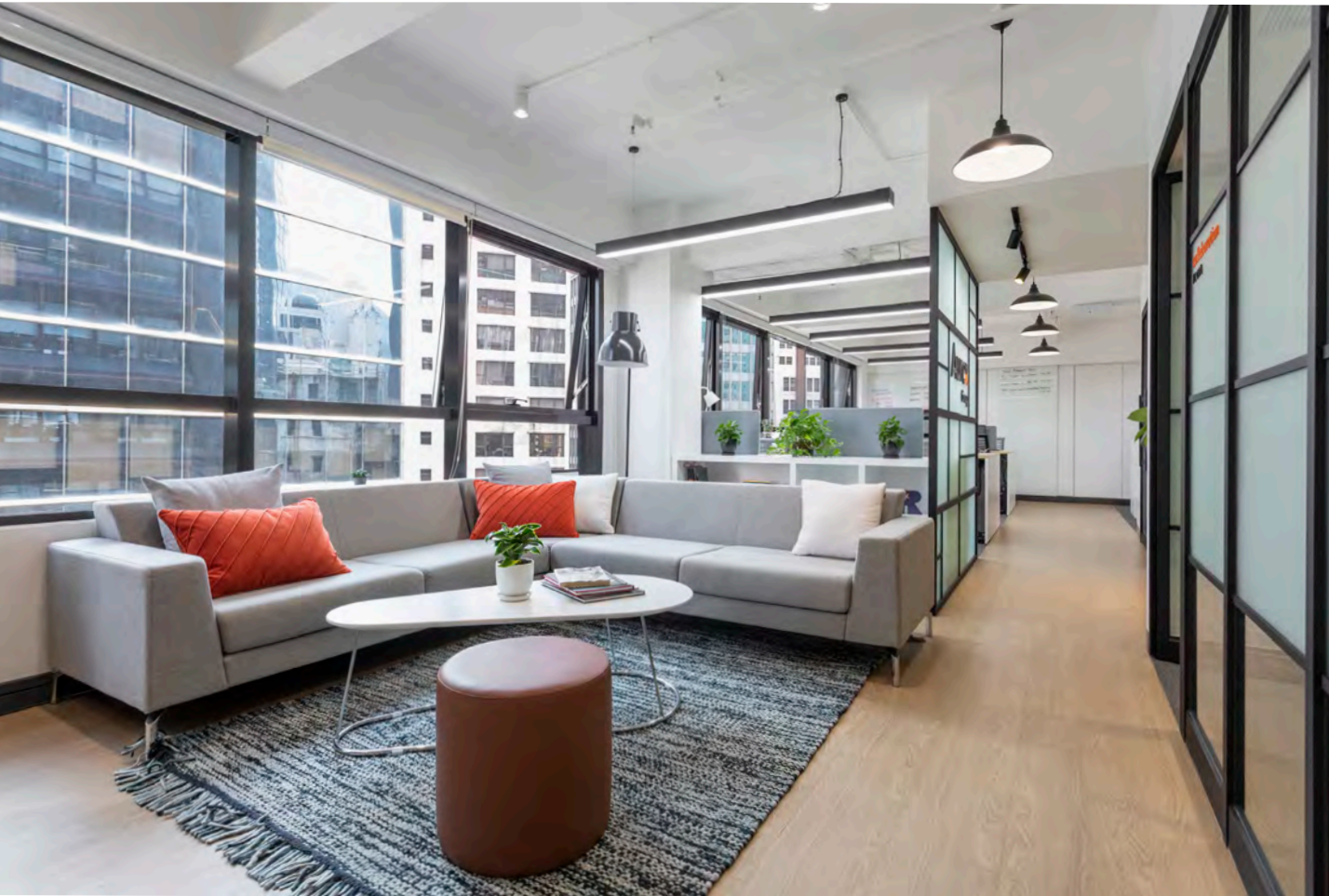


Fast Facts

- Render Services
- Collaboration with TMH Studio
- 1,680 sqm in Sydney, Australia

AUREX HONG KONG

Commercial



Fast Facts

- Design & Build
- 100 sqm Commercial Project
- Timeless & Minimalist Workplace

GREEN COURT HONG KONG

Commercial



Fast Facts

- Design
- Commercial Project
- 400 sqm

KW COMMERCE HEADQUARTERS HONG KONG

Commercial



- Fast Facts**
- Design & Build
 - Commercial & Workplace Project
 - 14,000 Sqm

HEX TRUST HONG KONG

Commercial



Fast Facts

- Design & Build
- New Concept Design with Localisation Approach
- 6,000 Sqm

FRENCH INTERNATIONAL SCHOOL HONG KONG

Commercial



- Fast Facts**
- Project Management
 - General Contracting
 - Design
 - Full Campus Renovation

FRENCH INTERNATIONAL SCHOOL HONG KONG

Commercial



Fast Facts

- Build
- A New Library, Refurbished Classrooms & Playgrounds
- Completed in 8 Weeks

EXPRESS VPN SINGAPORE

Commercial



- Fast Facts**
- Office Fit Out – Design & Build
 - Turnkey Service
 - 19,000 Sqm

ALTER DOMUS HONG KONG

Commercial



- Fast Facts**
- Design & Build
 - Office Fit Out
 - Turnkey Service
 - 5,000 Sqm

NICOMATIC SINGAPORE

Commercial



Fast Facts

- Design & Build
- Office Integrated with its Factory Operations
- 409 sqm

COCA COLA SINGAPORE

Commercial



- Fast Facts
- Design & Build
 - New Office Concept
 - Reception & Breakout Area

TEAMVIEWER SINGAPORE

Commercial



Fast Facts

- Design & Build
- Designed for Optimum Productivity & Collaboration
- 297 sqm

INDUS HONG KONG

Commercial



Fast Facts

- Design & Build
- Modern & Spacious Work Environment
- 314 sqm

BCW HONG KONG

Commercial



Fast Facts

- Design & Build
- Sustainable & Energy Efficient Workplace Design
- 418 sqm

QEELIN HONG KONG

Commercial

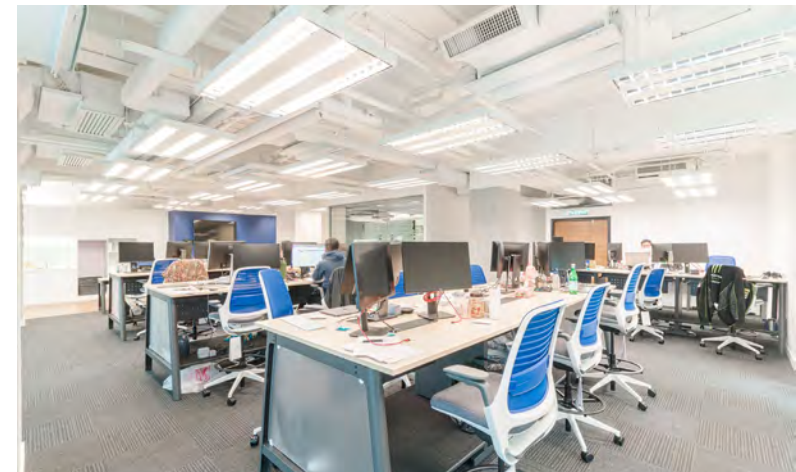


Fast Facts

- Design & Build
- Modern Design with Rich Cultural Connotations & Elements
- 353 sqm

TOPO HONG KONG

Commercial



- Fast Facts**
- Design & Build
 - Modern Design for Productivity
 - 700 sqm

RAM GROUP HONG KONG

Commercial



Fast Facts

- Design & Build
- Clean, Simple & Client-centered Design
- 789 sqm

TPC AUSTRALIA

Commercial



Fast Facts

- Design, Build & Procurement
- 600 sqm
- New Flagship Office
- Iconic building & premium location in Sydney

SKIN KANDY AUSTRALIA

Lifestyle & Specialty



Fast Facts

- Design
- Store Roll-out Nationwide
- Multiple Format

MELBOURNE
DESIGN
AWARDS
2021
★ DRIVENxDESIGN
SILVER

COMVITA NEW ZEALAND

Lifestyle & Specialty



Fast Facts

- New Flagship Store
- Fully Immersive Customer Experience
- Bespoke Joinery Design

SHERIDAN STUDIO AUSTRALIA

Lifestyle & Specialty



- Fast Facts**
- Design, Procurement & Build
 - 20 Flagship & SIS Roll out across Australia

SMIGGLE ASIA

Lifestyle & Specialty



Fast Facts

- Procurement & Build
- Joinery & Fittings Produced in China For 250 Stores in 5 Countries
- 20 Stores Built in Hong Kong

MARVEL USA

Lifestyle & Specialty



Fast Facts

- Design & Build
- World First Avengers Experience Pop-Up
- 6 weeks from Design to Install
- New York City Times Square

KIKKI.K SINGAPORE

Lifestyle & Specialty



- Fast Facts**
- Design, Project Management & Build
 - Fixtures Produced in China
 - Raffles & Ion Orchard Singapore

DUSK AUSTRALIA

Lifestyle & Specialty



Fast Facts

- Sourcing & Procurement
- Built Custom Joinery for 30+ Stores
- Nationwide Roll-out

KITCHEN COLLECTIVE AUSTRALIA



- Fast Facts**
- Design, Procurement & Build
 - New Showroom Concept in Melbourne
 - Modular Design

ZENYUM SINGAPORE

Health & Wellbeing



- Fast Facts
- Concept & Design
 - Brand Uplift
 - Multi-format Applications

SILK AUSTRALIA

Health & Wellbeing



- Fast Facts**
- Design, Procurement & Build
 - 60+ Clinic Roll-out Nationwide
 - Award Winning Design Concept

AUSTRALIAN SKIN CLINICS AUSTRALIA

Health & Wellbeing



Fast Facts

- Design & Joinery Production
- Project Management
- Australia's & New Zealand's Top Ranked Beauty Clinic

CLEARLAB SINGAPORE

Health & Wellbeing



Fast Facts

- Design
- One-off Flagship Store
- Fully immersive customer experience

OPSM AUSTRALIA

Health & Wellbeing



Fast Facts

- Design, Procurement & Build
- 100 Stores Roll-out Nationwide
- New Store Concept

NATURAL BEAUTY CHINA

Health & Wellbeing



Fast Facts

- Design
- 1300 Stores Roll-out in 36 months
- 68% Increase In Sales from Post Refurb

CHEMMART AUSTRALIA

Health & Wellbeing



Fast Facts

- Strategy & Design
- 250sqm One-off Flagship Store
- Developed to Challenge Traditional Pharmacy

LAUBMAN & PANK AUSTRALIA

Health & Wellbeing



Fast Facts

- Design & Procurement
- 12 Store Roll-out Nationwide
- Contemporary Design

THANK YOU

contact@thegreatergroup.com

www.thegreatergroup.com